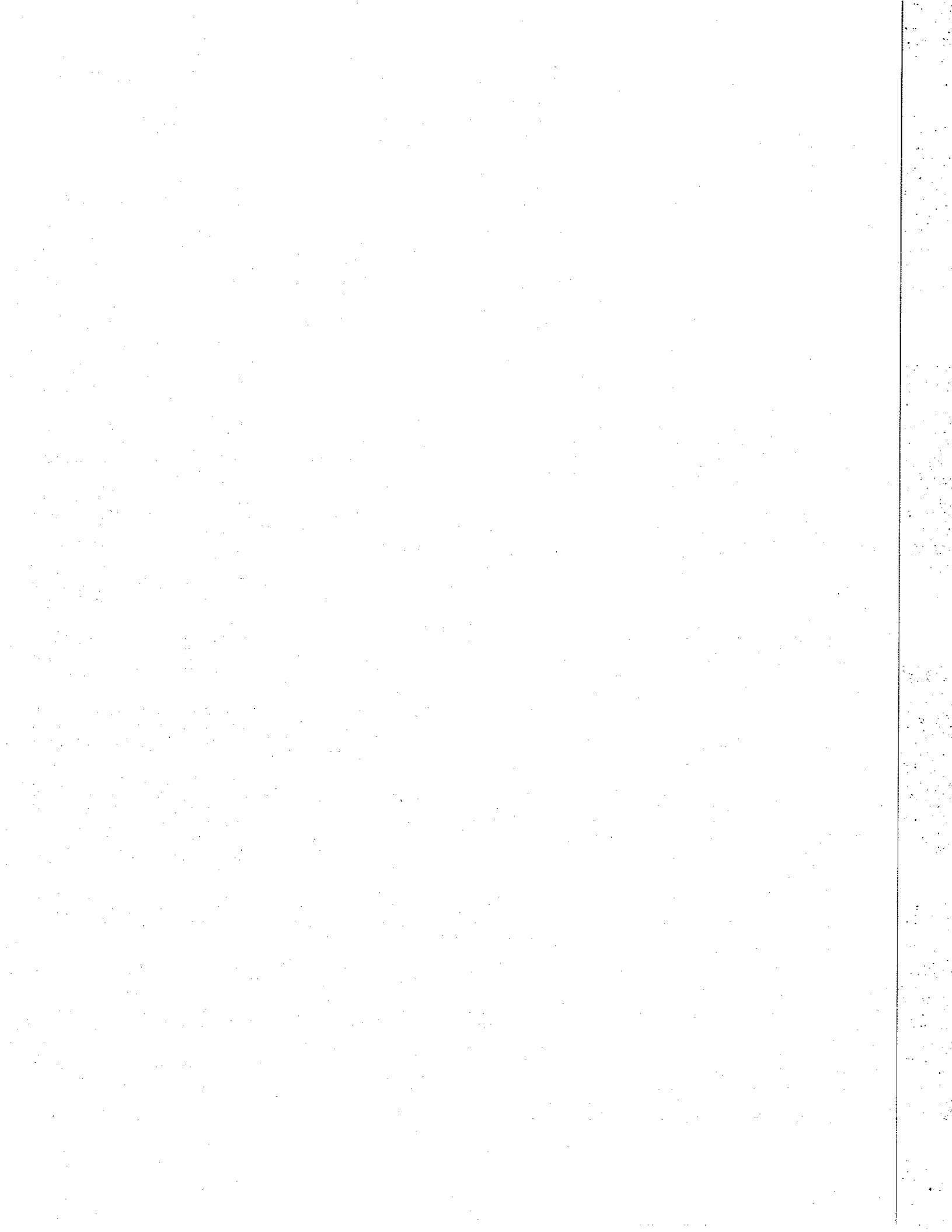


**GLOSSARY
AND
INDEX**



This glossary contains definitions of terms used in this budget, or in State budgeting and accounting procedures. It is not intended to be an exhaustive dictionary of accounting and budgeting terms, but does define the most commonly used terminology.

ADJUSTED APPROPRIATION— The total of an original appropriation, all supplemental appropriations and certain allotments from Inter-departmental appropriations.

ALL OTHER FUNDS— Revenues, other than Federal, which are not anticipated as resources to support the annual State budget. Upon receipt, these funds become appropriated, as provided by the language of the Appropriations Act.

ALLOTMENT— An allocation of a portion of an appropriation to make it available for encumbrance or disbursement by the agency to which appropriated, and usually applying to a period of time; e.g., a calendar quarter. In the instance of Inter-departmental appropriations, allotments made to the various agencies simultaneously transfer appropriations and make them available for encumbrance or disbursement by the agency.

ANTICIPATED RESOURCES— For each fiscal year, is the sum of the estimated surplus at the end of the prior fiscal year, together with all estimated revenues for the General Fund from all sources, including taxes and license fees, other miscellaneous departmental Federal aid and revenues of trust funds which are not within the General Treasury.

ANTICIPATED REVENUE— That portion of estimated revenues to be realized in any fiscal year which have been anticipated as General Fund resources to support the appropriations made, or undesignated fund balance projected, in the annual Appropriations Act. Such revenues are not available for expenditure unless appropriated by the Legislature.

APPROPRIATED REVENUE— Those revenues not previously anticipated or budgeted, which upon receipt increase appropriation balances as authorized in the Appropriations Act, and from which agencies may incur obligations or make expenditures for specific purposes.

APPROPRIATION— The sum of money authorized by an act of the Legislature for expenditure during a particular fiscal year.

AUTHORIZED POSITION— A position in a State government organization for which the primary funding source is not a General Fund appropriation. For such positions, the primary funding source is Federal or other non-State funds.

BLOCK GRANT— An amount allotted by the Federal government to the State to be allocated to a particular program area within general guidelines as the State determines.

BOND FUND— A fund into which are received the proceeds from the issuance of bonds, and from which are paid all proper expenditures for the purposes for which the bonds were authorized.

BUDGET— The proposed financial plan of the State government for the fiscal year, setting forth the anticipated resources from all sources and proposed appropriations.

BUDGETED POSITION— A position specifically approved and funded by a State appropriation in a salary object account.

BUDGET REQUEST— The request, required by law, of each spending agency for an appropriation or permission to spend during the next ensuing fiscal year.

CAPITAL CONSTRUCTION— One of the major subdivisions of the State budget, this category includes funds budgeted for:

1. Acquisition of or option to buy land and right-of-way and existing improvements therein, regardless of cost.

2. New buildings and structures not attached to or directly related to any existing structures, regardless of cost.

3. Projects whose estimated cost including land, planning, furnishing and equipping, is usually \$50,000 or more regardless of the construction involved.

CAPITAL PROJECT FUNDS— Account for financial resources for the acquisition or construction of major capital facilities.

CASINO CONTROL FUND— Accounts for fees from the issuance and annual renewal of casino licenses, work permit fees, and other license fees. Appropriations are made to fund the operations of the Casino Control Commission and the Division of Gaming Enforcement.

CASINO REVENUE FUND— Accounts for the tax on gross revenues generated by the casinos. Gross revenue refers to the total of all sums actually received by a licensee from gaming operations, less the total sums paid out as winnings to patrons. Appropriations from this fund must be used for reductions in property taxes, utility charges and other specified expenses of eligible senior and disabled citizens.

CATEGORICAL GRANT— An amount allotted by the Federal government to the State to be allocated to a particular program area for a specific purpose or mandate of the Federal government.

CERTIFICATES OF PARTICIPATION— Certificates which are sold to investors to raise cash to purchase equipment through a master lease-purchase agreement. The principal and interest on the certificates are paid from appropriations made to agencies which obtained equipment through the master lease-purchase program. (See also MASTER LEASE PROGRAM.)

CONTINGENCY APPROPRIATION— An appropriation to provide for unforeseen expenditures or for anticipated expenditures of uncertain amounts.

CONTROL ACCOUNT— Denotes an account established for the purpose of receiving and holding unallocated appropriations or appropriated receipts pending transfer to operating, or expenditure accounts.

DEBT SERVICE— One of the major subdivisions of the State budget, this category provides the resources to finance payment of general long-term debt principal and interest, such as bond issues or other long-term financing.

DEDICATED FUND— A fund normally contained in the General Fund, consisting of resources owned by the State, the use of which is constrained, either by statutory specification, dedication or other restriction, or a particular purpose or program. Receipts from a specific revenue source may be dedicated by the annual Appropriations Act or other legislation, to be used for some specific purpose.

DIRECT STATE SERVICES— One of the major subdivisions of the State budget, this category includes all general operating costs of State government, including programs which provide services directly to the public.

DISBURSEMENT— Payment of money out of any public fund or treasury. (See also EXPENDITURE.)

EMERGENCY FUND— A sum appropriated, within the Contingency Appropriation, for allotment to agencies to meet emergency conditions.

EMERGENCY TRANSFER— The allocation of funds to an agency from the Emergency Fund to meet unanticipated expenditures.

GLOSSARY

ENCUMBRANCE— A reservation of funds for future payment (disbursement) to liquidate an obligation incurred, usually by the issuance of a purchase order or the execution of a contract calling for payment in the future.

EVALUATION DATA— The quantitative expression of the end products produced or other elements involved in the work of an organization.

EXCESS RECEIPTS— Any receipts by an agency in excess of anticipated resources in the annual Appropriations Act. Such excess receipts may either be appropriated for the agency's use by the annual Appropriations Act, or may be considered as an overrun of anticipations and, therefore, credited to the General Fund undesignated fund balance.

EXPENDITURE— Denotes charges incurred, whether paid or unpaid, thus including both disbursements and liabilities. (See also **DISBURSEMENT** and **ENCUMBRANCE**.)

EXPENDITURE ACCOUNT— An account in which expenditure transactions are recorded, normally termed an object account; as opposed to a control account in which expenditures may not be recorded.

FISCAL YEAR— A twelve-month period of time to which the annual budget applies and at the end of which the State determines its financial position and the results of its operations. New Jersey State government has a July 1 to June 30 fiscal year.

FUND BALANCE—DESIGNATED— Unexpended and unencumbered appropriations which are authorized to continue into the subsequent fiscal year. (See also **REAPPROPRIATION**.)

FUND BALANCE—UNDESIGNATED— Fund equity unrestricted and available for appropriation.

GAAP— Generally Accepted Accounting Principles—The rules and procedures necessary to define uniform account and financial reporting standards, including broad guidelines and detailed practices. The Governmental Accounting Standards Board (GASB) promulgates accounting principles for state and local governments.

GENERAL FUND— The funds into which all State revenues, not otherwise restricted by statute, are deposited and from which appropriations are made. The largest part of the total financial operations of the State are accounted for in the General Fund. Revenues received from taxes, most Federal revenue and certain miscellaneous revenue items are recorded in the General Fund. The Appropriation Acts enacted by the Legislature provide the basic framework for the operation of the General Fund.

GENERAL TREASURY— Consists of all funds over which the State Treasurer is custodian and/or funds of which the State of New Jersey is the owner or beneficial owner.

GRANTS IN AID— One of the major subdivisions of the State budget, this category includes all payments not otherwise defined as State Aid, made to individuals, public agencies or private agencies for benefits or services of three types: benefits to which the recipient is entitled by law or regulation; provision of services for which the State has primary responsibility; and subsidies and provision of services for which the State has no responsibility, but which it elects to provide.

INTER-DEPARTMENTAL ACCOUNTS— A group of accounts to which are appropriated funds for payment for or on behalf of all State agencies of rent, employee benefits, and contingency funds for certain specified purposes.

INTERFUND TRANSFER— An amount transferred from one fund to another, normally authorized by the annual Appropriations Act.

LAPSE— The automatic termination of an appropriation. Appropriations are made for a single fiscal year. At the end of this period, any unexpected or unencumbered balances revert (lapse) to undesignated fund balance in the General Fund, or to the fund from which originally appropriated, unless specifically appropriated again in the succeeding fiscal year.

LIABILITY— Debt or other legal obligation arising out of transactions in the past which must be liquidated, renewed, or refunded at some future date. This term does not include encumbrances.

LINE ITEM— Any single line account for which an appropriation is provided in an Appropriations Act.

MASTER LEASE PROGRAM— A program of financing selected equipment including computers, vehicles and furniture purchases, over multiple years through the issuance of Certificates of Participation. The State of New Jersey, as lessee, is obligated to make payments equal to principal and interest of the certificates. (See also **CERTIFICATES OF PARTICIPATION**.)

NON-BUDGETED POSITION— A position, established on a temporary basis, for a limited period of time, using funds available from a Special Purpose appropriation, from balances available from unfilled budgeted positions, or from funds provided as a lump sum amount in a salary appropriation.

NON-STATE FUND (ACCOUNT)— Any fund (or account within a fund) within the General Treasury, the proceeds of which arise from a source other than the General Fund, typically from Federal or foundation grants, pooled inter-governmental funds, or service charges. (See also **REVOLVING FUND**.)

OBJECT ACCOUNT— This term applies to account classification to identify funds for articles purchased or services obtained (as distinguished from the results obtained from expenditures).

OBJECT CATEGORY— A group of objects of similar character categorized for classification purposes. Examples are personal services, materials and supplies, services other than personal, and maintenance and fixed charges.

OBLIGATION— An amount which the State may be required legally to meet out of its resources. It includes not only an actual liability, but also an unliquidated encumbrance, established by the issuance of a purchase order, the execution of a contract calling for payment at some future date, or a liability established in any other lawful way for future payment of a specified amount of money. An obligation normally results in an encumbrance in an appropriation account.

ORGANIZATION— Any State government entity which is established by statute, executive order or departmental order, to carry out one or more programs, for which a separate appropriation is made.

ORIGINAL APPROPRIATION— An appropriation made in the annual Appropriations Act.

PROGRAM— A group of related activities directed toward the accomplishment of an identifiable objective; it is established by statute, executive order or departmental order; it is distinguishable by its clientele, organization, subject matter or process.

PROGRAM CLASSIFICATION— An operating program function, consisting of closely related activities with an identifiable objective or goal, which is treated as an identifiable appropriation item.

PROPERTY TAX RELIEF FUND— Accounts for revenues from the New Jersey Gross Income Tax. Revenues realized from the Gross Income Tax are dedicated by the State Constitution. All receipts from taxes levied on personal income of individuals, estates, and trusts must be appropriated exclusively for the purpose of reducing or offsetting property taxes. Annual appropriations are made from the fund, pursuant to formulae established by the Legislature, to counties, municipalities, and school districts.

RAINY DAY FUND— A reserve into which certain revenues are deposited when the amount collected exceeds the amount anticipated. The balance in this fund may be appropriated upon certification by the Governor that anticipated revenues are less than those certified or to meet emergencies. Specific guidelines regarding this fund can be found in the General Provisions section of the Budget.

REAPPROPRIATION— The appropriation in any fiscal year of funds remaining unexpended at the end of the preceding fiscal year. (See also **FUND BALANCE—DESIGNATED**.)

RECEIPTS— A general term for cash received which may either satisfy a receivable, be a conversion of another asset or a refund of a prior expenditure; it may also represent revenues earned or realized.

RECEIVABLE— An anticipated sum of money which is treated as revenue even though it is "not in hand." Such sums are available for expenditure by State agencies when properly authorized. The establishment of a receivable results in an increase in an asset balance.

REFERENCE KEY (REF. KEY)— A columnar heading in the appropriation data section of each program budget which identifies to which program classification a particular account relates.

REQUEST YEAR— The fiscal year for which a budget request is made.

REVENUE ACCOUNT— An account established for the purpose of recording the receipt of revenues from a specific source.

REVENUES— Additions to assets (usually cash or receivable) which do not increase a liability nor represent the recovery of an expenditure, and which do not correspondingly reduce an asset. (Accounts in this category are credit balance accounts.)

REVOLVING FUND (ACCOUNT)— A fund (or an account within any fund) established to finance (1) State activities of a business or commercial nature or (2) the operation of an intragovernmental service agency or enterprise, which generates receipts (income) from the sale of commodities or services. Such receipts are available for the continuing operation of the activity or enterprise.

SPECIAL REVENUE FUNDS— These funds are used to account for resources legally restricted to expenditure for specified current operating purposes.

SPENDING AGENCY— Any department, board, commission, officer or other State agency to or for which an appropriation is made.

STATE AID— One of the major subdivisions of the State budget; this category shall mean:

1. Monies paid by the State to a local government or to a non-governmental agency for:
 - a. Assistance distributed to local governments according to a formula.
 - b. Assistance provided to aid local governments according to carry out activities which are the responsibility of the local unit.
 - c. Grants-in-Aid to non-governmental agencies for functions carried out on behalf of a local unit of government.
 - d. Payments specifically designated by law as State Aid.
2. Expenses incurred by a State department or agency on behalf of a local unit of government. Such expenditures may include:
 - a. Monies budgeted by the State to make payments on behalf of local government.
 - b. Administrative costs of State Aid programs.
 - c. Costs of State personnel engaged in services normally provided and paid for by a local government.

STATE TREASURY— A term used generally to refer to all funds (monies) deposited to the credit of the State of New Jersey. It includes the General Fund and funds from all other sources.

STATEWIDE PROGRAM— A functional grouping of related program classifications which contribute to satisfaction of some broader objective or objectives. Each Statewide program is presented as a separate component of the total budget of a department or agency.

STRATEGIC PLANNING— The process of making present decisions on the allocation of people, assets and priorities to reach an agreed upon objective, after consideration of needs and constraints.

SUPPLEMENTAL APPROPRIATION— An appropriation made in addition to (or supplemental to) the annual Appropriations Act.

SURPLUS— See **FUND BALANCE**.

TRANSFER (OF APPROPRIATION)— A transaction which reallocates all or part of any item in an appropriation to another item in that appropriation.

TRUST AND AGENCY FUNDS— These funds are used to account for assets held in a trustee capacity or as an agent for individuals, private organizations, other governments, and/or other funds.

UNEXPENDED BALANCE— The remaining appropriation balance in an account after charging all disbursements and encumbrances.

INDEX

A

Albert C. Wagner Youth Correctional Facility,
D-89, D-90, D-91

Academy for the Advancement of Teaching and
Management, D-120

Access and Use Management, D-387

Accounting and Financial Reporting (NJSA
52:27B-33), D-395

Actuarial Services, D-292

Adjudication of Administrative Appeals, D-374

Administration, D-371

Administration of Casino Gambling, I-9

Administration of Casino Gambling (NJSA
5:12-1), D-397, I-8

Administration of State Lottery (NJSA 5:9-1),
D-397

Administrative and Regulatory Support Services,
D-392

Office of Administrative Law, D-374, D-375,
D-376

Adult Activities, D-248, I-21

Adult and Continuing Education, D-111

Advocacy for the Developmentally Disabled,
D-362

Agricultural Experiment Station, D-210, D-211,
D-212

Department of Agriculture
Economic Planning and Development, D-23,
D-24, D-25, D-26, G-2
Economic Regulation, D-26, D-27, D-28
Management and Administration, D-28, D-29
Natural Resource Management, D-20, D-21,
D-22, D-23, G-2

Aid to County Colleges, D-171

AIDS Services, D-157

Air Pollution Control, D-137

Alcoholism Control, D-156

Ancora Psychiatric Hospital, D-235, D-236, D-237

Animal Disease Control, D-20

Appellate Services to Indigents, D-361

Apportionment Commission, D-10

Arnetown Veterans' Memorial Cemetary, G-21

Autobody Licensing and Enforcement, D-314

Adult Diagnostic and Treatment Center, Avenel,
D-84, D-85, D-86

B

Department of Banking, Economic Regulation,
D-32, D-33, D-34

Bayside State Prison, D-71, D-72, D-73

Bilingual Education, D-111, I-3

Boarding Home Regulation and Assistance, D-48,
I-18

Arthur Brisbane Child Treatment Center, D-237,
D-238, D-239

Budgeting, Planning and Control (NJSA
52:27B-12), D-395

Burial Services, D-345

Business Personal Property Tax Replacement,
D-407

C

New Jersey Commission on Capital Budgeting
and Planning, D-414, D-415, G-28

Central Planning, Direction and Management
Department of Corrections, D-105, D-106,
D-107, G-5
Department of Law and Public Safety, D-331,
D-332, D-333, G-19

Developmental Center At Ancora, D-253, D-254

Central Library Services, D-331

Certification Programs, D-120

Office of the Chancellor, D-170, D-171, D-172,
D-173, D-174, D-175, D-176, G-13

Chief Executive, Management and
Administration, D-16, D-17

Christopher Columbus Quincentennial
Observance Commission, D-11

Civil Courts, D-428

Clinical Laboratory Services, D-157

Commission for the Blind and Visually Impaired,
D-272, D-273, D-274, D-275

Commission on Business Efficiency In the Public
Schools, D-8

Commission to Study Services And Programs
Available to Hearing Impaired Children, D-13

Department of Commerce, Energy and Economic Development
 Cultural and Intellectual Development Services, D-36, D-37, D-38, G-3
 Economic Planning and Development, D-38, D-39, D-40, D-41, D-42, D-43, D-44, D-45, D-46, G-3

Commission on Missing Persons, D-327

Commodity Distribution, D-24

Department of Community Affairs
 Community Development Management, D-48, D-49, D-50, D-51, D-52, D-53, D-54, I-18
 Management and Administration, D-59, D-60, D-61
 Social Services Programs, D-55, D-56, D-57, D-58, D-59, I-11, I-18, I-19

Community Development Management, Department of Community Affairs, D-48, D-49, D-50, D-51, D-52, D-53, D-54, I-18

Community Health Services, D-156, I-12, I-19

Community Programs, D-94, D-247, D-248, D-249, D-250, I-14, I-15, I-21

Community Resources, D-55

Community Services, D-225

Compensatory Education, D-111, I-3

Compliance and Auditing, D-125

Consolidated Police and Firemen's Pension Fund, D-407

Construction Management Services (NJSA 52:18A), D-402

Consumer Affairs, D-335

Consumer Complaints, Legal and Economic Research, D-32

Department of Corrections
 Central Planning, Direction and Management, D-105, D-106, D-107, G-5
 Detention and Rehabilitation, D-64 - D-94, G-3, G-4
 Juvenile Correctional Services, D-98, D-99, D-100, D-101, D-102, D-103, D-104, D-105, G-5
 Parole and Community Programs, D-94, D-95, D-96, D-97

County and Municipal Aid, D-386

County Boards of Taxation, D-406

County and Municipal Government Study Commission, D-9

Court Reporting, D-428

Criminal Courts, D-428

Criminal Justice, D-320

Cultural and Intellectual Development Services
 Department of Commerce, Energy and Economic Development, D-36, D-37, D-38, G-3
 Department of Education, D-128, D-129, D-130, G-7
 Department of State, D-368, D-369, D-370, D-371, G-22

D

Dairy Industry Regulation, D-26

Division of the Deaf and Hard of Hearing, D-285, D-286

Delaware River Basin Commission, D-412, D-413, G-27

Detention and Rehabilitation, Department of Corrections, D-64 - D-94, G-3, G-4

Division of Developmental Disabilities, D-246, D-247, G-16

Development for Small Businesses, Women and Minority Businesses, D-39

Development of Historical Resources, D-368

Diagnostic Services, D-157

Direct Educational Services and Assistance, Department of Education, D-110, D-111, D-112, D-113, D-114, I-3

Division of Direct Services, G-6

Disability Determination, D-303

Domiciliary and Treatment Services, D-345

Driver Control, D-313

E

East Jersey State Prison, D-69, D-70, D-71

Economic Assistance and Security
 Department of Human Services, D-275, D-276, D-277, D-278, D-279, D-280, I-15, I-16, I-21, I-22
 Department of Labor, D-303, D-304, D-305, D-306

Economic Planning and Development
 Department of Agriculture, D-23, D-24, D-25, D-26, G-2

INDEX

- Department of Commerce, Energy and Economic Development, D-38, D-39, D-40, D-41, D-42, D-43, D-44, D-45, D-46, G-3
 - Department of Labor, D-298, D-299, D-300
 - Division of Economic Assistance, D-276, D-277, D-278, D-279, D-280
 - Economic Development, D-38
 - Economic Planning and Research, D-38
 - Economic Regulation
 - Department of Agriculture, D-26, D-27, D-28
 - Department of Banking, D-32, D-33, D-34
 - Department of Insurance, D-292, D-293, D-294, D-295
 - Department of Labor, D-300, D-301, D-302, D-303
 - Department of the Treasury, D-392, D-393, D-394
 - Education Administration and Management, Department of Education, D-125, D-126, D-127, G-7
 - Educational Support Services, Department of Education, D-119, D-120, D-121, D-122, D-123, D-124, I-4
 - Edna Mahan Correctional Facility for Women, D-80, D-81, D-82
 - Department of Education
 - Cultural and Intellectual Development Services, D-128, D-129, D-130, G-7
 - Direct Educational Services and Assistance, D-110, D-111, D-112, D-113, D-114, I-3
 - Education Administration and Management, D-125, D-126, D-127, G-7
 - Educational Support Services, D-119, D-120, D-121, D-122, D-123, D-124, I-4
 - Operation and Support of Educational Institutions, D-114, D-115, D-116, D-117, G-6
 - Supplemental Education and Training Programs, D-117, D-118, D-119, G-7, I-3, I-4
 - Education and Day Training, D-248, I-21
 - Education and Training, D-251, D-252, D-255, D-256, D-258, D-260, D-262, D-264, D-265, D-266, D-267, D-268, D-269, D-271
 - Education Program, D-64
 - Educational Institutions for the Handicapped, D-115
 - Election Law Enforcement, D-326, I-27
 - Emergency Response System Study Commission, D-9
 - Emergency Services, D-319
 - Employee Benefits, D-418, D-420, D-421, D-422
 - Employee Development and Personnel Services, D-354
 - Employee Relations and Collective Negotiations (Executive Order No. 4, 1970), D-395
 - Employment Development Services, D-307
 - Employment Services, D-306
 - Energy Resource Management, D-392
 - Enforcement of Workplace Standards, D-300
 - Environmental Planning and Administration, Department of Environmental Protection, D-152, D-153, D-154, G-11
 - Environmental Cancer and Toxic Substances, D-143
 - Department of Environmental Protection
 - Environmental Planning and Administration, D-152, D-153, D-154, G-11
 - Environmental Quality, D-137, D-138, D-139, D-140, D-141, D-142, D-143, G-9
 - Hazardous and Toxic Pollution Control, D-143, D-144, D-145, D-146, D-147, G-9
 - Natural Resource Management, D-132, D-133, D-134, D-135, D-136, D-137, G-8
 - Recreational Resource Management, D-148, D-149, D-150, D-151, D-152, G-10, G-11
 - Environmental Quality
 - Department of Environmental Protection, D-137, D-138, D-139, D-140, D-141, D-142, D-143, G-9
 - Miscellaneous Executive Commissions, D-412, D-413, G-27
 - Epidemiology and Disease Control, D-156, I-12, I-19
 - Equal Education Opportunity, D-120
 - Equal Employment Opportunity and Affirmative Action, D-354
 - Executive Management, D-16
- ## F
- Facilities Planning and School Building Aid, D-121, I-4
 - Family Courts, D-428
 - Federal Aid Bridge and Highway Safety Projects, D-378, D-386
 - Federal Aid Consolidated Primary Highway Projects, D-378
 - Federal Aid Interstate Highway Projects, D-378

Federal Aid Rural Highway Projects, D-378, D-385
 Federal Aid Urban System Highway Projects, D-378, D-385
 Federal Liaison Activities, D-408
 Field Operations, D-428
 Financial Administration, Department of the Treasury, D-397, D-398, D-399, D-400, D-401, I-8, I-9, I-10
 Financial Management, D-397
 Fire Safety Inspection Program(C52:27D-192 et seq.), D-49
 Fire Safety Program, D-49
 The Forensic Psychiatric Hospital, D-231, D-232, D-233
 Forest Resource Management, D-132

G

Gaming Enforcement, D-327, I-7
 General Government Services
 Department of Law and Public Safety, D-333, D-334, D-335
 Department of Personnel, D-354, D-355, D-356, D-357
 Department of State, D-371, D-372, D-373, D-374, D-375, D-376, G-23
 Department of the Treasury, D-401, D-402, D-403, D-404, D-405, D-406, G-25, G-26, G-27
 Inter-Departmental Accounts, D-418, D-419, D-420, D-421, D-422, D-423, D-424, D-425
 General Academic Education, D-120
 General Assembly, D-3
 General Formula Aid, D-110, I-3
 General Medical Services, D-241, I-12, I-20
 General Social Services, D-281, I-23
 General Vocational Education, D-117, I-3
 Geological Survey, D-138
 Glassboro State College, D-180, D-181, D-182
 Governmental Review and Oversight
 Department of the Treasury, D-394, D-395, D-396, D-397
 Miscellaneous Executive Commissions, D-414, D-415, G-28
 Garden State Reception and Youth Correctional Facility, D-86, D-87, D-88, D-89

Green Brook Regional Center, D-251, D-252, D-253
 Greystone Park Psychiatric Hospital, D-227, D-228, D-229

H

Habilitation and Rehabilitation, D-273
 Hackensack Meadowlands Development Commission (C13:17-1 et seq.), D-49
 Senator Garrett W. Hagedorn Center for Geriatrics, D-239, D-240
 Hazardous and Toxic Pollution Control
 Department of Environmental Protection, D-143, D-144, D-145, D-146, D-147, G-9
 Miscellaneous Executive Commissions, D-413, D-414
 Department of Health
 Health Administration, D-166, D-167, D-168
 Health Planning and Evaluation, D-164, D-165, D-166
 Health Services, D-156, D-157, D-158, D-159, D-160, D-161, D-162, D-163, D-164, G-11, G-12, I-11, I-12, I-19
 Health Administration, Department of Health, D-166, D-167, D-168
 Commission on Legal and Ethical Problems In the Delivery of Health Care, D-11
 Health Facilities Evaluation, D-164
 Health Planning and Evaluation, Department of Health, D-164, D-165, D-166
 Health Planning and Resource Development, D-164
 Health Services, D-251, D-252, D-253, D-254, D-255, D-258, D-260, D-262, D-264, D-266, D-268, D-269, D-271
 Department of Health, D-156, D-157, D-158, D-159, D-160, D-161, D-162, D-163, D-164, G-11, G-12, I-11, I-12, I-19
 Health Services Administration and Management, D-241, I-12, I-13
 Higher Educational Services, Department of Higher Education, D-170 - D-221, G-12 - G-14
 Department of Higher Education, Higher Educational Services, D-170 - D-221, G-12 - G-14
 Hunterdon Developmental Center, D-266, D-267
 Homestead Exemptions, D-407, I-2
 Housing Code Enforcement, D-48

INDEX

Housing Services, D-48

Department of Human Services

- Division of Management and Budget, D-287
- Economic Assistance and Security, D-275,
D-276, D-277, D-278, D-279, D-280, I-15,
I-16, I-21, I-22
- Management and Administration, D-287,
D-288, D-289, G-17, I-23
- Mental Health Services, D-225, D-226, D-227,
D-228, D-229, D-230, D-231, D-232, D-233,
D-234, D-235, D-236, D-237, D-238, D-239,
D-240, G-14, G-15
- Operation and Support of Educational
Institutions, D-246 - D-272, G-15, G-16,
I-14, I-15, I-21
- Social Services Programs, D-281, D-282, D-283,
D-284, D-285, D-286, G-16, I-22, I-23
- Special Health Services, D-240, D-241, D-242,
D-243, D-244, D-245, D-246, I-12, I-13,
I-14, I-20
- Supplemental Education and Training
Programs, D-272, D-273, D-274, D-275

Hunters' and Anglers' License Fund, D-132

I

Income Maintenance, D-276

Information Services, D-428

Initial Response/Case Management, D-281

Institutional Care Program, D-64

Institutional Control and Supervision, D-64

Institutional Program Support, D-64

Institutional Security Services, D-287

Institutional Treatment Program, D-64

Instruction, Community Programs and
Prevention, D-273

Department of Insurance, Economic Regulation,
D-292, D-293, D-294, D-295

Insurance and Other Services, D-418

Inter-Departmental Accounts, General
Government Services, D-418, D-419, D-420,
D-421, D-422, D-423, D-424, D-425

Intergovernmental Relations Commission, D-6

International Trade, D-38

Interstate Sanitation Commission, D-412

J

Jersey City State College, D-183, D-184, D-185,
D-186

Edward R. Johnstone Training and Research
Center, D-268, D-269, D-270

Joint Committee on Public Schools, D-6, D-7

Joint Training Center Management and
Operations, D-342

Judicial Services, The Judiciary, D-428, D-429,
D-430, D-431, D-432, D-433, D-434, D-435

Juvenile Medium Security Center, D-102, D-103

Juvenile Community Programs, D-103, D-104,
D-105

Juvenile Correctional Services, Department of
Corrections, D-98, D-99, D-100, D-101,
D-102, D-103, D-104, D-105, G-5

Juvenile Rehabilitation, D-103

K

Marie H Katzenbach School for the Deaf, G-6

Kean College of New Jersey, D-186, D-187, D-188,
D-189

L

Department of Labor

Economic Assistance and Security, D-303,
D-304, D-305, D-306

Economic Planning and Development, D-298,
D-299, D-300

Economic Regulation, D-300, D-301, D-302,
D-303

Manpower and Employment Services, D-306,
D-307, D-308, D-309, D-310, I-24

Department of Law and Public Safety

Central Planning, Direction and Management,
D-331, D-332, D-333, G-19

General Government Services, D-333, D-334,
D-335

Law Enforcement, D-319, D-320, D-321, D-322,
D-323, D-324, D-325, D-326, G-18

Protection of Citizens' Rights, D-335, D-336,
D-337, D-338, D-339, D-340, G-19, I-16,
I-17

Special Law Enforcement Activities, D-326,
D-327, D-328, D-329, D-330, D-331, I-7,
I-8, I-27

Vehicular Safety, D-313, D-314, D-315, D-316,
D-317, D-318, G-17, G-18

- Law Enforcement, Department of Law and Public Safety, D-319, D-320, D-321, D-322, D-323, D-324, D-325, D-326, G-18
- Law Enforcement Planning, D-327
- New Jersey Law Revision Commission, D-12
- Legal and Professional Services, D-428
- Legal Services, D-333
- Legislative Activities, Legislature, D-2, D-3, D-4, D-5, D-6, D-7, D-8, D-9, D-10, D-11, D-12, D-13, G-2
- Legislative Support Services, D-4
- Legislature, Legislative Activities, D-2, D-3, D-4, D-5, D-6, D-7, D-8, D-9, D-10, D-11, D-12, D-13, G-2
- Library Services, D-128
- Licensing and Enforcement, D-292
- Licensing and Registration, D-313
- Lifeline Programs, D-275, I-15, I-16, I-22
- Local Government Classification and Placement, D-354
- Local Government Services, D-48
- Local Highway Facilities, Department of Transportation, D-385, D-386, D-387
- Locally Provided Services, D-406
- Lottery Fund Schedule
Direct State Services, L-34
State Aid, L-34
- M**
- Maintenance and Operations, D-378
- Division of Management and Budget, D-287, D-288, D-289, I-23
- Management of Employee Benefits Programs (NJSA 52:18A-95), D-402
- Management of State Investments (NJSA 52:18A-79), D-397
- Management Services, D-395
- Manpower and Employment Services, Department of Labor, D-306, D-307, D-308, D-309, D-310, I-24
- Marina Operations, D-148
- Marine Lands Management, D-132
- Marine Police Operations, D-320
- Marketing Services, D-23
- Marlboro Psychiatric Hospital, D-233, D-234, D-235
- Division of Medical Assistance and Health Services, D-240, D-241, D-242, D-243, D-244, D-245, D-246, D-275, D-276, I-12, I-13, I-14, I-15, I-16, I-20, I-21, I-22
- Menlo Park Veterans' Memorial Home, D-347, D-348, G-21
- Division of Mental Health and Hospitals, D-225, D-226, G-15
- Mental Health Advocacy, D-361
- Mental Health Services, Department of Human Services, D-225, D-226, D-227, D-228, D-229, D-230, D-231, D-232, D-233, D-234, D-235, D-236, D-237, D-238, D-239, D-240, G-14, G-15
- Mid-State Correctional Facility, D-76, D-77, D-78
- Department of Military and Veterans Affairs
Military Services, D-342, D-343, D-344, G-19, G-20
Services to Veterans, D-345, D-346, D-347, D-348, D-349, D-350, D-351, G-21, G-22
- Military Services, Department of Military and Veterans Affairs, D-342, D-343, D-344, G-19, G-20
- Miscellaneous Executive Commissions
Environmental Quality, D-412, D-413, G-27
Governmental Review and Oversight, D-414, D-415, G-28
Hazardous and Toxic Pollution Control, D-413, D-414
- Miscellaneous Grants-In-Aid, I-3
- Miscellaneous Grants-in-Aid, D-110
- New Jersey Monorail Authority Commission, D-10
- Montclair State College, D-193, D-194, D-195, D-196
- Mountainview Youth Correctional Facility, D-92, D-93, D-94
- Municipal Courts, D-428
- Municipal Purposes Tax Assistance Program, D-407
- Museum Services, D-368
- N**
- N.J. Commission to Deter Criminal Activity, D-327
- New Jersey Institute of Technology, D-217, D-218, D-219, D-220, D-221, G-14

INDEX

Narcotic and Drug Abuse Control, D-156
Natural Resource Management
 Department of Agriculture, D-20, D-21, D-22,
 D-23, G-2
 Department of Environmental Protection,
 D-132, D-133, D-134, D-135, D-136, D-137,
 G-8
Navigational Aids, D-148
Northeast Interstate Low-Level Radioactive
 Waste Commission, D-413, D-414
New Jersey Educational Opportunity Fund,
 D-170
New Jersey National Guard Support Services,
 D-342
New Jersey State Prison, D-67, D-68, D-69
New Lisbon Developmental Center, D-261,
 D-262, D-263
New Jersey Training School for Boys, D-100,
 D-101
North Jersey Developmental Center, D-257,
 D-258, D-259
North Princeton Developmental Center, D-270,
 D-271, D-272
Noise Control, D-138
Non-Federal Aid Highway Projects, D-378
Nonpublic School Aid, D-110
Northern State Prison, D-82, D-83, D-84

O

Occupational and Environmental Health Control,
 D-157
Office of Legislative Services, D-3, D-4, D-5
Office of State Planning (NJSA 52:18A-201),
 D-395
Office of Telecommunications and Information
 Systems (OTIS), D-402
Office of the Public Guardian (NJSA 52:27G-20 et
 seq.), D-55
New Jersey Olympian Development And
 Recognition Study Commission, D-12
Ombudsman's Office, D-55
Operation and Support of Educational Institutions
 Department of Education, D-114, D-115, D-116,
 D-117, G-6

 Department of Human Services, D-246 – D-272,
 G-15, G-16, I-14, I-15, I-21
Operation of State Professional Boards, D-335,
 I-17
Other Central Support Services (NJSA 52:27B-6,
 D-403
Other Commodity Regulation, D-26
Other Distributed Taxes, D-406
Other Property Management Services (NJSA
 52:18A-3), D-402
Outpatient Diagnostic and Treatment Services,
 D-64

P

Palisades Interstate Park Commission, D-151,
 D-152, G-11
Paramus Veterans' Memorial Home, D-348,
 D-349, D-350, G-21
Parks Management, D-148, D-151
Parole, D-94
Office of Parole and Community Programs, D-94,
 D-95, D-96
Parole and Community Programs, Department of
 Corrections, D-94, D-95, D-96, D-97
Patient Care and Health Services, D-227
Patrol Activities and Crime Control, D-151, D-319
Department of Personnel, General Government
 Services, D-354, D-355, D-356, D-357
Personnel Management Systems, D-354
Personnel Policy Development and General
 Administration, D-354
Pesticide Control, D-143
Pharmaceutical Assistance to the Aged (PAA),
 D-241
Pharmaceutical Assistance to the Aged and
 Disabled, I-13, I-20
Pharmaceutical Assistance to the Aged and
 Disabled (PAAD), I-12
Physical Plant and Support Services, D-64, D-106,
 D-227, D-251, D-252, D-254, D-255, D-256,
 D-258, D-260, D-262, D-264, D-266, D-268,
 D-269, D-271, D-342, D-345, D-378
Physical Plant Operation and Maintenance (NJSA
 52:18A-3), D-402
Pinelands Development Credit Bank, D-32

Planning and General Management Support,
 Department of Transportation, D-387, D-388,
 D-389, D-390
 Planning and Research, D-298
 Planning, Management, and General Support,
 D-105
 Plant Pest and Disease Control, D-20
 Police Services and Public Order, D-319
 Private Disability Insurance Plan, D-303
 Private Sector Labor Relations, D-307
 Probation Services, D-428
 Processing and Administration (NJSA 54:1-2),
 D-397
 Program Operations Support, D-105
 Programs for the Aging, D-55, I-11, I-18
 Project COED, D-115
 Promulgation and Licensing of Workplace
 Standards, D-300
 Property Rentals, D-418
 Protection of Citizens' Rights
 Department of Law and Public Safety, D-335,
 D-336, D-337, D-338, D-339, D-340, G-19,
 I-16, I-17
 Department of the Public Advocate, D-361,
 D-362, D-363, D-364, D-365
 Protection of Civil Rights, D-335
 Department of the Public Advocate
 Management and Administration, D-360, D-361
 Protection of Citizens' Rights, D-361, D-362,
 D-363, D-364, D-365
 Public and Regulatory Services, D-292
 Public Broadcasting Services, D-36
 New Jersey Public Broadcasting Authority, G-3
 Public Contracts Affirmative Action Office (P.L.
 1975, c.127), D-408
 Public Defender Management, D-362
 Public Information Services, D-402
 Public Interest Advocacy, D-361
 Public Sector Labor Relations, D-307
 Public Transportation, Department of
 Transportation, D-383, D-384, D-385, G-24,
 I-25
 Public Waste Water Facilities, D-138
 Pupil Transportation, D-120, I-4

Purchased Residential Care, D-248, I-21
 Purchasing and Inventory Management (NJSA
 52:18A-3), D-402

R

Radiation Protection, D-143
 Rail Freight Lines, D-379
 Railroad and Bus Operations, D-383, I-25
 Railroad Property Taxes, D-407
 Ramapo College of New Jersey, D-199, D-200,
 D-201, D-202
 Rate Counsel, D-362
 Real Property Management, D-402
 Recreational Resource Management, Department
 of Environmental Protection, D-148, D-149,
 D-150, D-151, D-152, G-10, G-11
 Recording, D-371
 Recruitment and Selection, D-354
 Regulation of Alcoholic Beverages, D-327
 Regulation of Banking Industry, D-32
 Regulation of Cable Television, D-392
 Regulation of Racing Activities, D-327
 Regulation of Savings and Loan Associations,
 D-32
 Regulation of the Real Estate Industry, D-292
 Regulatory and Governmental Affairs, D-152
 Regulatory Efficiency, D-375
 Reimbursement of Senior/Disabled Citizens' and
 Veterans' Tax Exemptions, D-407
 Reimbursement-Senior Citizens and Veterans, I-5,
 I-25
 Research, Policy and Planning, D-287, I-23
 Residential Care and Habilitation, D-251, D-252,
 D-253, D-254, D-255, D-258, D-260, D-262,
 D-264, D-266, D-268, D-269, D-271
 Resource Development Services, D-20
 Revenue Collection Services, D-314
 Revenue Sharing, D-407, I-5
 Review and Enforcement of Ethical Standards,
 D-327
 Risk Management, D-402
 Riverfront State Prison, D-78, D-79
 Rutgers The State University, D-205, D-206,
 D-207, D-208, D-209, D-210, G-13

INDEX

S

- Southern State Correctional Facility, D-74, D-75, D-76
- Salary and Other Benefits, D-418, D-423, D-424, D-425
- School Finance, D-125
- School Nutrition, D-120
- New Jersey Commission on Science and Technology, D-43, D-44, D-45, D-46
- Office of the Secretary of State, D-371, D-372, D-373, D-374
- Security Responsibility, D-313
- Senate, D-2
- Service to Local Districts, D-120
- Services for the Deaf, D-285
- Services to Veterans, Department of Military and Veterans Affairs, D-345, D-346, D-347, D-348, D-349, D-350, D-351, G-21, G-22
- Commission to Study Sex Discrimination In the Statutes, D-8
- Shellfish and Marine Fisheries Management, D-132
- Social Services Programs
 - Department of Community Affairs, D-55, D-56, D-57, D-58, D-59, I-11, I-18, I-19
 - Department of Human Services, D-281, D-282, D-283, D-284, D-285, D-286, G-16, I-22, I-23
- Social Supervision and Consultation, D-248, I-14, I-21
- Solid Waste Resource Management, D-138
- Special Health Services, Department of Human Services, D-240, D-241, D-242, D-243, D-244, D-245, D-246, I-12, I-13, I-14, I-20
- Special Law Enforcement Activities, Department of Law and Public Safety, D-326, D-327, D-328, D-329, D-330, D-331, I-7, I-8, I-27
- Special Compensation, D-303
- Special Education, D-111, I-3
- Special Procedures and Investigations (NJSA 54:1-2), D-397
- Spill Prevention, Response and Site Cleanup, D-143
- Sports and Recreation, D-55
- Department of State
 - Cultural and Intellectual Development Services, D-368, D-369, D-370, D-371, G-22
 - General Government Services, D-371, D-372, D-373, D-374, D-375, D-376, G-23
- State Aid Road System Projects, D-386
- State Athletic Control State Athletic Control, D-327
- State Capitol Complex Security, D-320
- State Central Motor Pool (Executive Order No. 2, 1962), D-402
- State Colleges Programs, D-176, D-177
- State Commission of Investigation, D-7
- State Contingency Fund, D-418, D-423
- State Disability Insurance Plan, D-303
- State Highway Facilities, Department of Transportation, D-378, D-379, D-380, D-381, D-382, D-383, G-23, G-24
- Division of State Library, G-7
- State Medical Examiner, D-320
- State Parole Board, D-96, D-97
- State Subsidies and Financial Aid, Department of the Treasury, D-406, D-407, D-408, I-2, I-5, I-6, I-25, I-26
- Statewide Narcotics Prosecution Program, D-320
- Richard Stockton State College, D-202, D-203, D-204, D-205
- Student Financial Assistance Administration, D-171
- Student Financial Support Services, D-171
- Substitute Care, D-281
- Superior Court, Appellate Division, D-428
- Supplemental Education and Training Programs
 - Department of Education, D-117, D-118, D-119, G-7, I-3, I-4
 - Department of Human Services, D-272, D-273, D-274, D-275
- Support of the Arts, D-128, D-368
- Support to Independent Institutions, D-170
- Supreme Court, D-428
- System-Wide Program Support, D-64, D-65, D-66

T

- Thomas A. Edison State College, D-177, D-178, D-179
- Tax Audit Services (NJSA 54:1-2), D-397
- Teachers' Pension and Annuity Assistance, D-121, I-4
- The Judiciary, Judicial Services, D-428, D-429, D-430, D-431, D-432, D-433, D-434, D-435
- The New Jersey Commission on Science and Technology, D-43
- Department of Transportation
 Local Highway Facilities, D-385, D-386, D-387
 Planning and General Management Support, D-387, D-388, D-389, D-390
 Public Transportation, D-383, D-384, D-385, G-24, I-25
 State Highway Facilities, D-378, D-379, D-380, D-381, D-382, D-383, G-23, G-24
- Transportation Systems Improvements, D-379
- Travel and Tourism, D-38
- Travel Services, D-403
- Department of the Treasury
 Economic Regulation, D-392, D-393, D-394
 Financial Administration, D-397, D-398, D-399, D-400, D-401, I-8, I-9, I-10
 General Government Services, D-401, D-402, D-403, D-404, D-405, D-406, G-25, G-26, G-27
 Governmental Review and Oversight, D-394, D-395, D-396, D-397
 Management and Administration, D-408, D-409, D-410, G-27
 State Subsidies and Financial Aid, D-406, D-407, D-408, I-2, I-5, I-6, I-25, I-26
- Trenton Psychiatric Hospital, D-229, D-230, D-231
- Trenton State College, D-196, D-197, D-198, D-199
- Trial Services to Indigents and Special Programs, D-361
- Lloyd McCorkle Training School for Boys and Girls, D-98, D-99

U

- Unemployment Insurance, D-303
- Uniform Construction Code, D-48

- University of Medicine and Dentistry of New Jersey, D-212, D-213, D-214, D-215, D-216, D-217, G-13, G-14
- Unsatisfied Claims, D-292
- Urban Programs, D-39
- Utility Regulation, D-392

V

- Vehicle Control and Driver Testing, D-313
- Vehicular Safety, Department of Law and Public Safety, D-313, D-314, D-315, D-316, D-317, D-318, G-17, G-18
- Veterans' Program Support, D-345, D-346, D-347
- Veterans' Outreach and Assistance, D-345
- Vineland Developmental Center, D-255, D-256, D-257
- Vineland Veterans' Memorial Home, D-350, D-351, G-22
- Violent Crimes Compensation, D-335
- Vital Statistics, D-156
- Vocational Rehabilitation Services, D-306, I-24

W

- Waste Management, D-144
- Water Enforcement, D-138
- Water Facilities Operations, D-132
- Water Monitoring and Planning, D-138
- Water Supply and Watershed Management, D-132
- Woodbridge Developmental Center, D-263, D-264, D-265
- Wildlife Management, D-132
- The William Paterson College of New Jersey, D-189, D-190, D-191, D-192
- Women's Programs, D-55
- Woodbine Developmental Center, D-259, D-260, D-261
- Workers' Compensation, D-303

Y

- Division of Youth and Family Services, D-281, D-282, D-283, D-284, D-285, G-16, I-22, I-23

NOTES